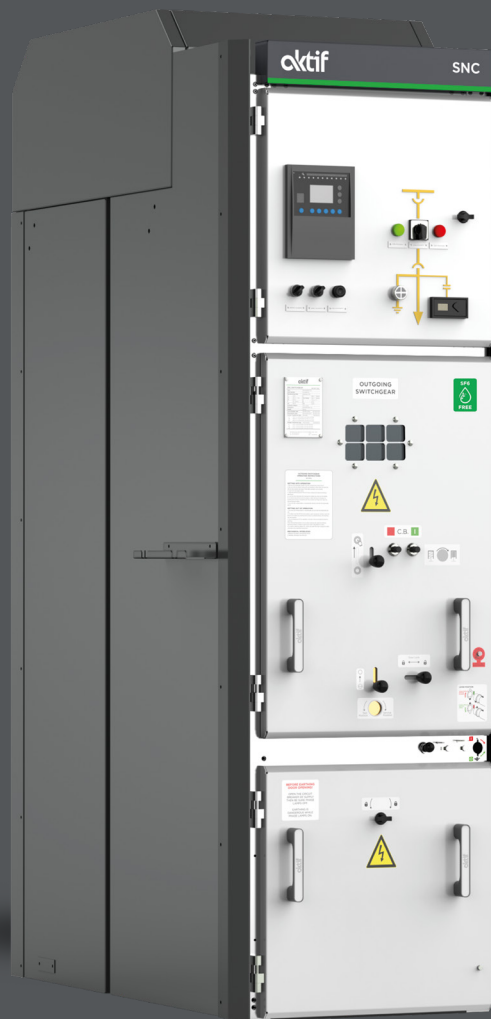


Metal Clad Switchgears



SNC Series

SNC 12 | SNC 24 | SNC 36

Switching Life to
Infinity 

aktif
ELEKTROTEKNIK

Metal Clad Switchgears

SNC Series

SNC Series Metal Clad Switchgears are switching and control switchgears manufactured up to 36 kV, 3150 A, 40 kA.

SNC Series Metal Clad Switchgears are manufactured in compliance with type tested design successfully passed the electrical and mechanical tests according to IEC 62271-200 and seismic tests IEC62271-210, EN60068, IEEE693, GR-63 Core Zone4 standards in the international accredited laboratories of Europe.

SNC Series Metal Clad Switchgears come in 2 types.

- **SNC-1** Withdrawable Circuit Breaker
- **SNC-2** Withdrawable Circuit Breaker and Withdrawable Voltage Transformer

Advantages

- 4/5 segregated compartments
- Fast and easy service with withdrawable VT (SNC-2 only)
- A wide range of brands is available for equipment (Relay, CB, ...)
- Accessibility to the cable connection compartment is available from the front or rear.
- Withdrawable type SF6 or vacuum circuit breaker
- Special color option for special applications
- Protection class is IP4X (doors are closed), IP3X (between compartments)
- Minimum area thanks to compact and small design
- Proven reliability with unique design
- Special manufacturing option against corrosion for tropical conditions
- 5 years warranty option
- Design with load break switch and vacuum contactor.

Safety

- AFLR Internal Arc Classification is
- LSC-2B Loss of Service Continuity Class
- PM Partition Class
- Personnel safety with mechanical and electrical interlock
- Operational safety with special hinged door design
- Continuity of earthing system
- Optimum reliability thanks to 3 mm sheet steel construction

Service Conditions		
Application Area		Indoor
Altitude		1000m
Ambient Temperature	Min.	-5°C
	Max.	40°C
	Average period of 24h	35°C
Humidity	Max. (period of 24h)	95%
	Max. (period of one month)	90%
Ambient Pollution		Light



Color

- RAL 9003 for front covers
- RAL 7015 for side covers

Application Areas

- Power Generation
- Transmission and Distribution
- Transformer Substations
- Heavy Industry
- Rolling Mills
- Pipelines
- Shipyards
- Emergency and Backup Power Facilities
- Mining
- Transportation

Standards

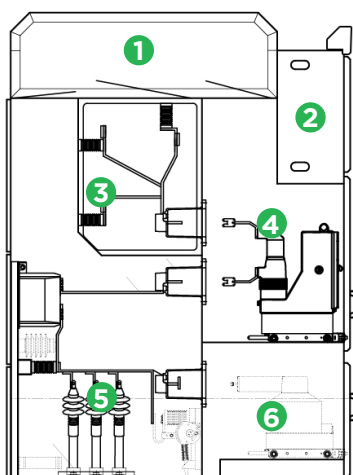
- IEC 62271-1
- IEC 62271-200
- IEC 62271-100
- IEC 62271-102
- IEC 62271-105
- IEC 61869-2
- IEC 61869-3
- IEC 60273
- IEC 60051
- IEC 60255
- IEC 62271-210
- EN 60068
- IEEE 693 -1
- GR-63-Core-Zone4

Technical Specifications

Descriptions		SNC 12	SNC 24	SNC 36	
Rated voltage (rms)	kV	13.8	24	36	
Power frequency withstand voltage 50 Hz, 1 mi (rms) between phases and phase ground	kV	32	50	70	
Lightning impulse withstand voltage 1.2/50 ms (peak) between phases and phase - ground	kV	75/85	125	170	
Rated frequency	Hz	50-60			
Rated (rms) current	Busbars	A	630 ... 3150	630 ... 3150	630 ... 2500
	(with forced ventilation)	A	4000	-	-
	CB & Disconnect	A	630 ... 3150	630 ... 3150	630 ... 2500
	(with forced ventilation)	A	4000	-	-
	Load Break Switch	A	630 ... 1250	630 ... 1250	630 ... 1250
	Vacuum Contactor	A	400	800	-
Rated short time withstand (rms) current	CB & Disconnect	kA	16 ... 40	16 ... 31.5	16 ... 31.5
	Load Break Switches	kA	16 ... 20	16 ... 20	16 ... 20
	Vacuum Contactor	kA	8	8	-
Short circuit withstand time	s	3	3	3	
Rated short time withstand (peak) current	CB & Disconnect	kA	40 ... 100	40 ... 100	40 ... 80
	Load Break Switches	kA	40 ... 50	40 ... 50	40 ... 50
	Vacuum Contactor	kA	20	20	-
Internal arc fault	Current	kA	40	31.5	31.5
	Duration	s	1	1	1
Earthing switch	Rated short time withstand current	kA	16 ... 40	16 ... 31.5	16 ... 31.5
	Short circuit withstand time	s	3	3	3

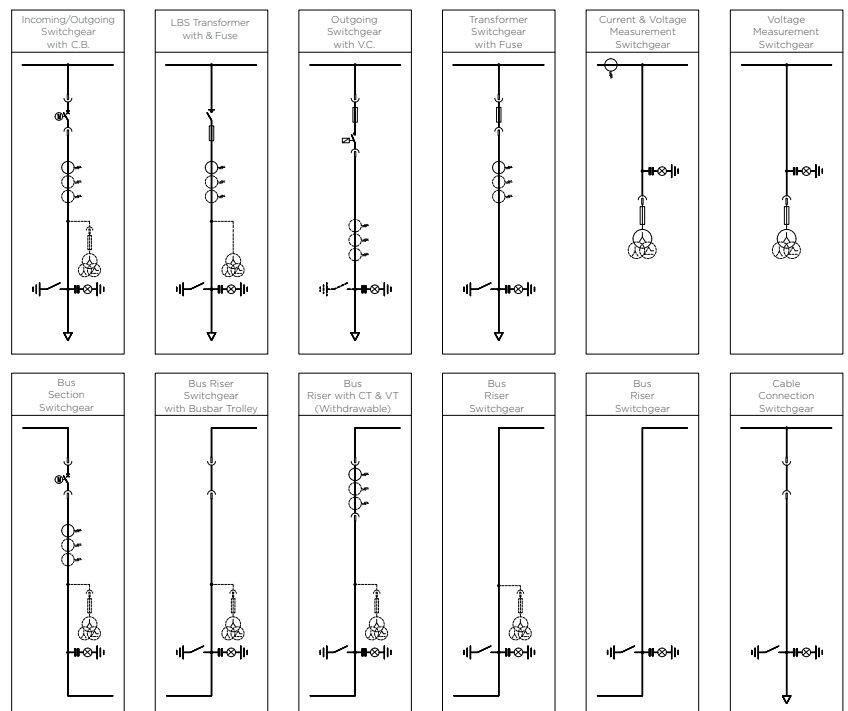
Type	Voltage	Current	Width	Depth		Height
				SNC-1	SNC-2	
SNC 12	13.8 kV	630/1250 A	650 mm	1400 mm	1750 mm	2445 mm
		1600/2000 A	800 mm			
		2500/3150 A	1000 mm			
SNC 24	24 kV	630/1250 A	800 mm	1750 mm	1750 mm	2570 mm
		1600 .. 2500 A	1000 mm			
SNC 36	36 kV	630 .. 2500 A	1100 mm	2350 mm	2350 mm	2820 mm

Typical Feeder Unit



- 1- Pressure Relief Channel
- 2- LV Compartment
- 3- Busbar Compartment
- 4- Circuit Breaker Compartment
- 5- Cable Compartment
- 6- Withdrawable VT Compartment (Optional)

Single Line Diagram of Typical Units





Doc. Nr: SNC-20240820/En Owing to periodical improvements of our products the supplied products may differ in some details from the data stated in the prospectus material. Published by Aktif Data subject to alteration without notice. Design & Creation: Aktif / Photos: Aktif - Stock: xchng & Shutterstock, Published Date: 20.08.2024

Headquarters

Bayraktar Bul. Şehit Sk. No: 5
34775 Ümraniye, İstanbul, TR
Phone : +90 (216) 314 93 20
Fax : +90 (216) 314 93 60
www.aktif.net - info@aktif.net



Germany Office

Bahnhofstrasse 82-86 35390
Giessen, Germany
Phone : +49 176 60940534
www.aktif.net
info.de@aktif.net



HV Factory

Akşemsettin Mah. Çatalca Sk. No: 113 06930
Sincan, Ankara, TR
Phone : +90 (312) 269 46 02
Fax : +90 (312) 269 45 01
www.aktif.net - info@aktif.net



LV Factory

Kargalı Hanbaba Organize Sanayi, 2. Sk.,
No: 5, Hendek, Sakarya, TR
Phone : +90 (264) 276 64 50
Fax : +90 (264) 276 64 52
www.aktif.net - info@aktif.net

