

Energy Analyzers and Meters



NPM290-5G - NPM290-5J Series
Panel Type Energy Analyzers

Energy Analyzers and Meters

DIN Rail and Panel Type Energy Meters

Energy meters are devices that provide perfect readability with a white backlit LCD display, and are used for single-phase and three-phase energy measurements in residential and utility applications.

These devices measure and display various important electrical parameters, and also offer a communication port for remote reading and monitoring.

The bidirectional energy measurement feature makes them an ideal option for solar energy measurements as well.

Additionally, models with LoRa communication capability are available, as well as prepaid or generator tariff options.

Application Areas

- Shopping Malls
- Marinas
- Residences
- Airports
- Factories
- Holiday Resorts
- Prisons
- EV Charging Stations

Advantages

- Class 0.5 and Class 1 applications

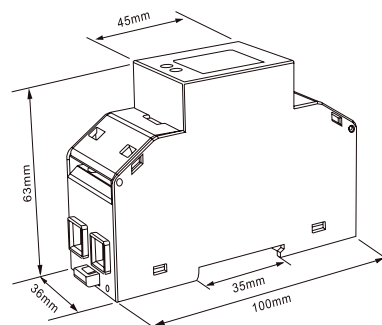
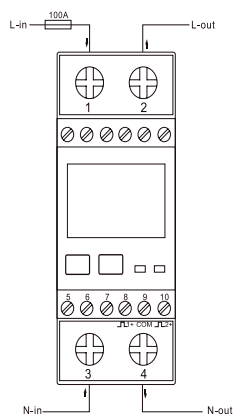
- Competitive pricing
- Compatibility with all software via Modbus RTU protocol
- Measurement capacity up to 100 Amps
- Bidirectional measurement capability
- Smaller footprint compared to competitors
- High measurement accuracy classes
- Wide measurement range
- Billing of high-cost liquid fuels with generator tariff option
- Advantage of collecting payments from prepaid subscribers
- DIN rail mounting (35mm)
- Wide range of solutions: direct connection and current transformer models
- RS485 (Modbus) or wireless data transmission (LoRaWAN communication)
- Savings on cabling and labor costs
- Fewer failure points due to wireless feature
- Convertible to modular or panel type solutions (only with additional equipment for NDM70 series)
- Advantage of collecting payments from subscribers and prepaid collection
- Compatibility with direct connection and CT models with a wide range of solutions
- White backlit LCD display
- Scroll settings display feature
- Support for AMR (Automatic Meter Reading) and SCADA systems
- Multifunctional measurement
- Easy payment collection (prepaid type)



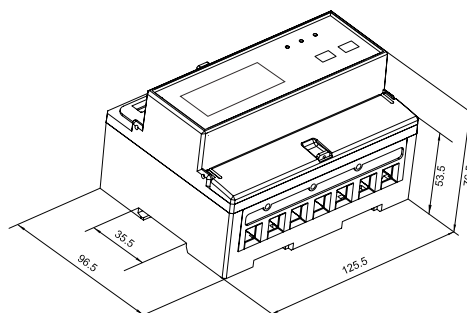
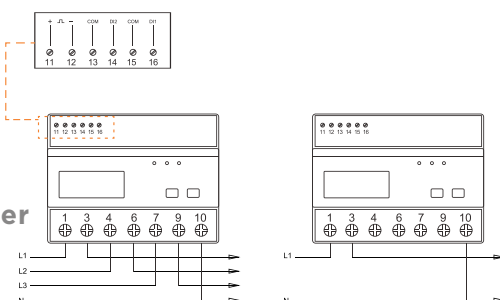
Energy Analyzers and Meters

Wiring Diagram – Dimensions for DIN Rail and Panel Type Energy Meters

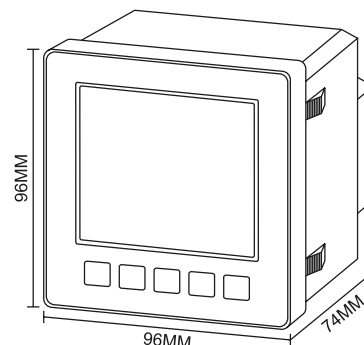
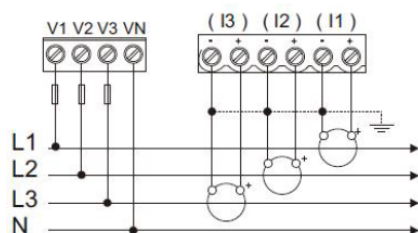
NDM30 - NDM30 Lora
DIN Rail Type Single-Phase Electricity Meter



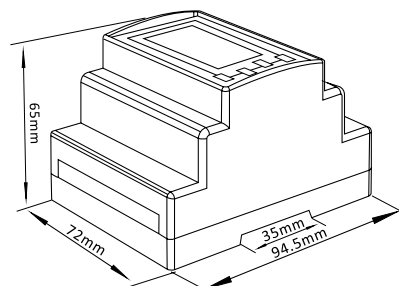
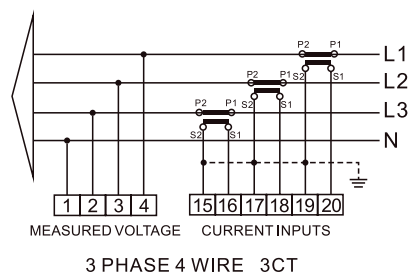
NDM50
NDM50 Lora
DIN Rail Type Three-Phase Electricity Meter



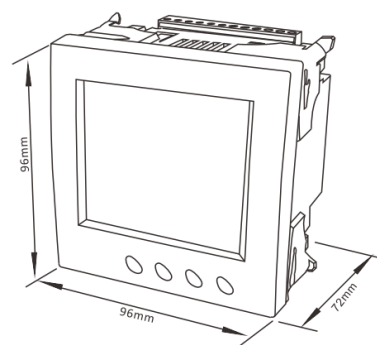
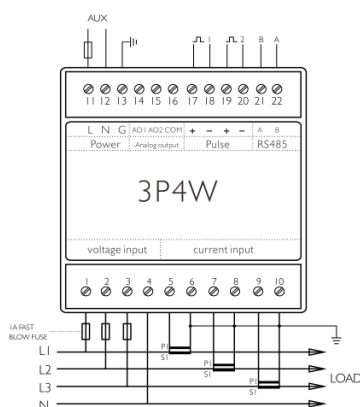
NPM270BX
NPM270BX-ETH
Series Panel Type
Energy Analyzers



NDM70
NDM70 Lora
DIN Rail Type Three-Phase Electricity Meter



NPM290-5G
NPM290-5J Series
Panel Type Energy
Analyzers



Energy Analyzers and Meters

NPM290-5G - NPM290-5J Series Panel Type Energy Analyzers

	MODEL	
	NPM290-5G	NPM290-5J
Standards		
IEC62053-22	✓	✓
IEC 62053-23	✓	✓
IEC61557-12	✓	✓
EN50470-1/3	✓	✓
IEC61000-3-2	✓	✓
IEC61000-4-2,3,4,5,6,8,11	✓	✓
EN55011 Class A	✓	✓
EN61326-1:2013	✓	✓
EN61326-2-3:2013	✓	✓
EN 61010_1:2010+A1:2019	✓	✓
EN 61010-2-30-2010	✓	✓
Specifications		
Nominal voltage	3x230/400V	3x230/400V
Operating voltage	85-275V AC / 120-380V DC	85-275V AC / 120-380V DC
Base current	5mA-6A	5mA-6A
Overcurrent resistance	Continuous 8A 120A 0.5 Second	Continuous 8A 120A 0.5 Second
Operational frequency range	45-65Hz	45-65Hz
Internal power consumption	< 7VA/3.5W	< 7VA/3.5W
Display	LCD	LCD
Maximum reading	8 digits, up to 9999999.9 kWh	8 digits, up to 9999999.9 kWh
Accuracy		
Voltage	0.2%	0.2%
Current	0.2%	0.2%
Frequency	1.0%	1.0%
Power factor	1.0%	1.0%
Active power	0.5%	0.5%
Active energy	0.5%	0.5%
Reactive energy	2.0%	2.0%
Performance criteria		
Relative humidity	<95% (non-condensing)	<95% (non-condensing)
Operating temperature	-25°C to +55°C	-25°C to +55°C
Storage temperature	-40°C to +70°C	-40°C to +70°C
Installation category	CAT III	CAT III
Mechanical environment	M1	M1
Protection against dust and water ingress	IP51	IP51
Protection class	Class II	Class II
Communication and Outputs		
Interface standard and protocol	Modbus RTU (RS485)	Modbus RTU (RS485) and Ethernet
Type	2-wire half duplex	2-wire half duplex
Baud rate	2400bps-38400bps	2400bps-38400bps
Address	1 to 247	1 to 247
Parity	None (default), Single, Dual	None (default), Single, Pair
Stop bit	1 or 2	1 or 2
Communication distance	Max 1000 m	Max 1000 m
Digital input	4	4
Digital output	2	2



Doc. Nr: NNPM290-20250205/Eng Owing to periodical improvements of our products the supplied products may differ in some details from the data stated in the prospectus material. Published by Aktif Data subject to alteration without notice. Design & Creation: Aktif / Photos: Aktif - Stock.xchng & Shutterstock, Published Date: 05.02.2025

Headquarters

Bayraktar Bul. Şehit Sok. No: 5
34775 Ümraniye, İstanbul, TR
Phone : +90 (216) 314 93 20
Fax : +90 (216) 314 93 60
www.aktif.net - info@aktif.net



Germany Office

Bahnhofstrasse 82-86
35390 Giessen, Germany
Phone : +49 176 60940534
www.aktif.net
info.de@aktif.net



HV Factory

Akşemsettin Mah. Atalca Sk. No: 113 06930
Sincan, Ankara, TR
Phone : +90 (312) 269 46 02
Fax : +90 (312) 269 45 01
www.aktif.net - info@aktif.net



LV Factory

Kargalı Hanbaba Organize Sanayi, 2. Sk.,
No: 5, Hendek, Sakarya, TR
Phone : +90 (264) 276 64 50
Fax : +90 (264) 276 64 52
www.aktif.net - info@aktif.net

